

SCANGRIP®

EX PROOF

EX PROOF



SPECIALIZED WORK LIGHTS
FOR EXPLOSIVE AREAS

SCANGRIP®
EX PROOF

2024



INNOVATIVE EXPLOSION PROOF LED WORK LIGHTS

SCANGRIP is first-mover when it comes to development of new and innovative LED work lights. Now, we are proud to present a complete range of powerful and competitive explosion proof work lights.

The LED technology is evolving very rapidly. We have taken advantage of these multiple technology developments to design a range of explosion proof LED work lights providing extremely bright illumination and very long lifetime.

The entire range has been upgraded to provide maximum light output and appears as the most competitive range on the market.



EX

SCANGRIP - work lights of the future



Handlamps

04



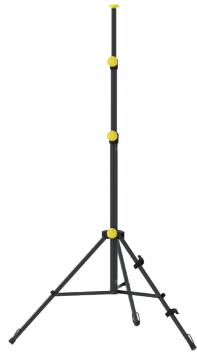
EX-VIEW

05



NOVA-EX series

06



Stands and suspensions

07



Technical specifications

08



3
years
warranty

PATENT PROTECTED

Rechargeable EX PROOF work lights

// SCANGRIP's range of handy and flexible LED work lights is perfect for the professional user working in narrow areas, where light is limited.

The two handlamps are supplied with both main light and top light. The main light offers two-step operating options depending on the type and duration of the work carried out: Step 1 = 50 %, step 2 = 100 % light output. The lamp heads tilt up to 180 degrees and you can place

the lamps everywhere you want during inspection work with the turnable sturdy hook or the strong built-in magnet in the bottom to have both hands free for working.

They are also easy to carry in the pocket or in the work belt by the built-in belt clip. In this way, you always have the work light close at hand when you need efficient and bright illumination for a job.



UNI-EX

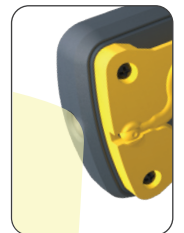
Multifunctional handheld work light with charging base

// Sturdy and powerful COB LED handlamp

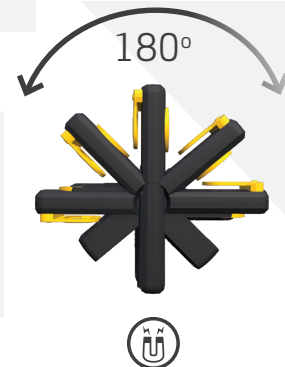
UNI-EX is extremely durable and suitable for demanding tasks. The light output has been increased from 290 lumen to 350 lumen, and the operation time is now up to 15 hours.

The intelligent battery indicator at the back keeps you informed about the battery level. To display battery level during use, press on/off switch 3 seconds. The lamp is recharged in the charging base. When not in use, keep the lamp in the charging base which is prepared for wall mounting. Waterproof, IP65.

UNI-EX
€ 269.90
03.5617



Spot light



3
years
warranty

ZONE
0/20

IEC IECEx IECEx TPS 17.0003X

TUV TUV IT 16 ATEX 083 X

Ex II 1G Ex ia IIC T3 Ga
II 1D Ex ia IIC T130°C Da

EU DESIGN
PATENT
3451038

PATENT PROTECTED

MIDI-EX

Small multifunctional handheld work light

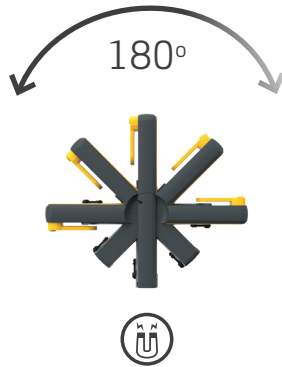


// Slim and portable COB LED handlamp

MIDI-EX is durable and incredible light-weight which makes it very easy to carry around. It is rechargeable and provides up to 2.5 hours of operation time. The size and surface of MIDI-EX provide a comfortable, ergonomic grip. Waterproof, IP65.



Spot light



MIDI-EX
€ 104.90
03.5611



| | | | | |
|------------------------|--|--|--|---|
| <p>ZONE 2 / 22</p> | <p>IEC IECEX IECEx TPS 18.0018X</p> | <p>TUV SUD TPS 18 ATEX 054006 0015 X Rev. 00</p> | <p>Ex II 3G Ex ic IIC T5 Gc II 3D Ex ic IIIC T100°C Dc IP65</p> | <p>EU DESIGN PATENT 5597010</p> |
|------------------------|--|--|--|---|

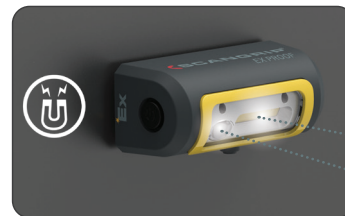
EX-VIEW

Multifunctional headlamp
with sensor function and built-in magnet



// Sturdy and compact headlamp

EX-VIEW is durable and remarkably light-weight. The design is ergonomic for a perfect, comfortable fit, and the woven band is strong and adjustable. When set on sensor mode, EX-VIEW is turned on/off only by waving a hand in front of the lamp in a dual movement - even when wearing thick gloves. As an extra feature, the headlamp can be detached easily from the band and used as a hand lamp or placed on a magnetic surface for inspection work.



ILLUMINATED AREA



EX-VIEW
€ 104.90
03.5606



| | | | | |
|------------------------|--|--|--|---|
| <p>ZONE 2 / 22</p> | <p>IEC IECEX IECEx TPS 18.0017X</p> | <p>TUV SUD TPS 18 ATEX 054006 0014 X Rev. 00</p> | <p>Ex II 3G Ex ic IIC T5 Gc II 3D Ex ic IIIC T100°C Dc IP65</p> | <p>EU DESIGN PATENT 5597010</p> |
|------------------------|--|--|--|---|

Extremely powerful and outstanding EX PROOF work lights

// The two NOVA explosion proof work lights are both very powerful COB LED work lights. They are designed with the newest state-of-the-art LED technology for the professional user.

With a significant increase in light output, NOVA-EX and NOVA-EX R now provide +70 % and +160 % more light respectively, which makes them extremely competitive compared to other solutions on the market.

The new COB (chip on board) LED technology provides a uniform and completely even illumination with a high CRI (colour rendering index) value close to daylight which is particularly effective as work lighting. Depending on the work task in question you can choose between 2 light modes: 50 % and 100 %, respectively.

// Extreme durability

The body is made of diecasted aluminium and shockproof to endure even strong strokes and shocks. Both work lights endure the rough, wet and dirty conditions of the professional working environment, and withstand even outdoor work in all kinds of weather conditions, as they are completely waterproof (IP65).

By the integrated carrying handle it is convenient to carry the work light from one work place to the other. The flexible stand can be used as a hanger and to position the lamp in the desired angle.



NOVA-EX

€ 459.90

03.5619

NOVA-EX

Supplied with 10 m cable NOVA-EX is the perfect work light where there is access to permanent electricity

EU DESIGN
PATENT
3451038

3
years
warranty

| | | | | |
|--|--------------------|----------------------|---|--|
| | IECEx TPS 17.0002X | TÜV IT 16 ATEX 082 X | II 2G Ex db eb mb IIC T6 Gb II 2D Ex tb IIIC T85°C Db IP65 | |
|--|--------------------|----------------------|---|--|

PATENT PROTECTED



NOVA-EX R

€ 749.90

03.5618

NOVA-EX R

Rechargeable work light offering complete flexibility where there is no access to electricity.

| | | | | | |
|--|--|--|---|--|-------------------------------------|
| | | | <p>II 2G Ex db eb mb IIC T6 Gb II 2D Ex tb IIIC T85°C Db IP65</p> | | <p>EU DESIGN PATENT 3451038</p> |
|--|--|--|---|--|-------------------------------------|

ACCESSORIES

SCANGRIP accessories are approved to be used in explosive atmosphere, zone 1 and 21, in combination with NOVA-EX and NOVA-EX R

MAGNETIC BRACKET EX

€ 59.90

03.5616

For positioning on magnetic surfaces

Designed to fix NOVA-EX work lights on magnetic surfaces. Supplied with two extremely powerful magnets with a holding force of more than 20 kg each, providing a holding force equivalent to 420N. Weight 700 g.

ATEX Statement No.
64.105.18.06966.01



SCAFFOLDING BRACKET EX

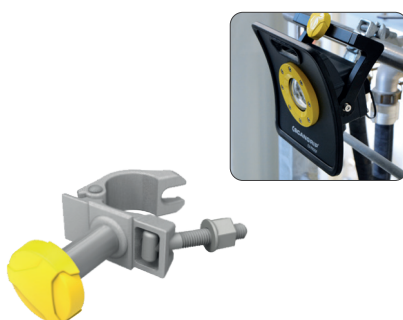
€ 39.90

03.5609

For flexible positioning on scaffoldings

Designed to fix NOVA-EX work lights on scaffoldings or any round object ø40-50 mm. Weight 900 g.

ATEX Statement No.
64.105.17.02965.01



TRIPOD EX

€ 139.90

03.5607

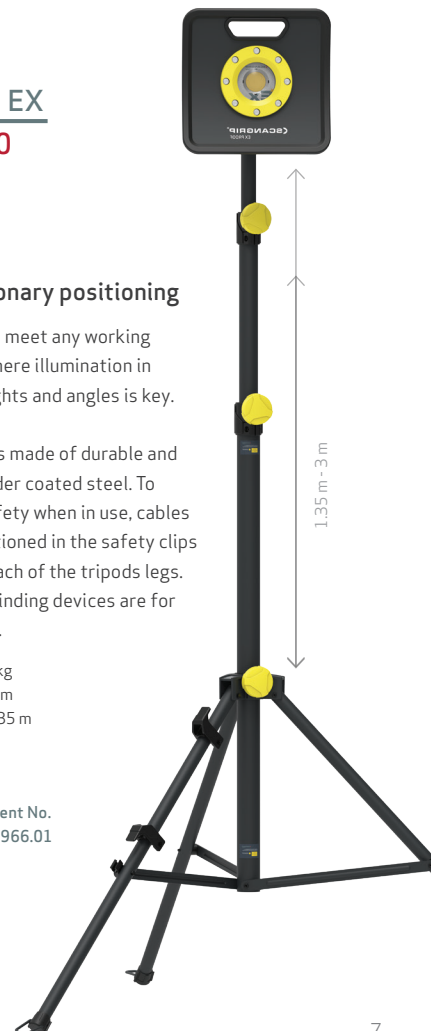
For stationary positioning

Designed to meet any working situation where illumination in various heights and angles is key.

The tripod is made of durable and sturdy powder coated steel. To increase safety when in use, cables can be positioned in the safety clips placed on each of the tripods legs. The cable winding devices are for excess wire.

Max. load 10 kg
Max. height 3 m
Min. height 1.35 m
Ø 1.2 m
Weight 6 kg

ATEX Statement No.
64.105.17.02966.01



Handlamps



Headlamps



| | ZONE 2/22 MIDI-EX | ZONE 0/20 UNI-EX | ZONE 2/22 EX-VIEW |
|-----------------------------|--------------------------|--------------------------|--------------------------|
| Product number | 03.5611 | 03.5617 | 03.5606 |
| Light source | COB-LED Spot: SMD LED | COB-LED Spot: SMD LED | COB-LED Spot: SMD LED |
| Luminous flux, lumen | 100-200 Spot: 100 | 175-350 Spot: 150 | 200 Spot: 100 |
| Illuminance, lux@0.5 m | 140-280 Spot: 600 | 250-500 Spot: 1200 | 300 Spot: 1000 |
| Adjustable light output | 2 levels | 2 levels | No |
| Beam angle | 105° Spot: 60° | 100° Spot: 30° | 100° Spot: 35° |
| CRI | Ra > 80 | Ra > 80 | Ra > 80 |
| CCT | 6000 K | 6000 K | 6000 K |
| Operating time, h | Up to 5 Spot: 2 | Up to 15 Spot: 9 | Up to 2.5 Spot: 3.5 |
| Charging time, h | 3.5 | 12 | 3.5 |
| Battery | 3.8 V / 1600 mAh Li-ion | 3.6 V / 6700 mAh Li-ion | 3.8 V / 1600 mAh Li-ion |
| Protection class | IP65 | IP65 | IP65 |
| Impact resistance | 1 m | 1 m | 1 m |
| EX ZONE | 2 and 22 | 0 and 20 | 2 and 22 |
| Cable | 1 m USB | 1 m USB | 1 m USB |
| Operating voltage AC | - | - | - |
| Charging voltage/current DC | - | - | - |
| Power consumption | Max 3 W | Max 3.5 W | Max 1.6 W |
| Charger incl. | Yes | Yes | Yes |
| Temperature | -20 to +45 °C | -20 to +45 °C | -20 to +45 °C |
| Dimensions | 181.8 x 46 x 29 mm | 220 x 70 x 39 mm | 95 x 55 x 43 mm |
| Net weight | 181 g | 436 g | 142 g |
| Price | € 104.90 | € 269.90 | € 104.90 |

NOVA-EX series



| | ZONE 1/21 NOVA-EX | ZONE 1/21 NOVA-EX R |
|-----------------------------|--------------------------------------|--|
| Product number | 03.5619 | 03.5618 |
| Light source | High CRI COB LED | High CRI COB LED |
| Luminous flux, lumen | 1700-3400 | 2000-4000 |
| Illuminance, lux@0.5 m | 2900-5800 | 3000-6000 |
| Adjustable light output | 2 levels | 2 levels |
| Beam angle | 110° | 100° |
| CRI | Ra > 95 | Ra > 95 |
| CCT | 6000 K | 6000 K |
| Operating time, h | - | Up to 4 h |
| Charging time, h | - | 3 |
| Battery | - | 21.6 V / 3350 mAh Li-ion |
| Protection class | IP65 | IP65 |
| Impact resistance | 1 m | 1 m |
| EX ZONE | 1 and 21 | 1 and 21 |
| Cable | 10 m / 3 x 1 mm ² H05RN-F | 5 m / 2 x 0.75 mm ² H05RN-F |
| Operating voltage AC | 100-240 V 50/60 Hz | - |
| Charging voltage/current DC | - | 21.6 V / 1 A |
| Power consumption | 35 W | 31 W |
| Charger incl. | - | Yes |
| Temperature | -20 to +45 °C | -20 to +45 °C |
| Dimensions | 270 x 266 x 123 mm | 270 x 261 x 130 mm |
| Net weight | 5.3 kg | 4.3 kg |
| Price | € 459.90 | € 749.90 |

SPECIALIZED WORK LIGHT SOLUTIONS



DETAILING AND COLOUR MATCH

UV CURING

Light is an important tool for many tasks. We take that very seriously when developing specialist lights for niche markets – such as lighting solutions for the painting and detailing industries.

HAZARDOUS WORKING AREAS



Hazardous places are classified in terms of zones based on the frequency and duration of the occurrence of an explosive atmosphere.

**ZONE
0/20**

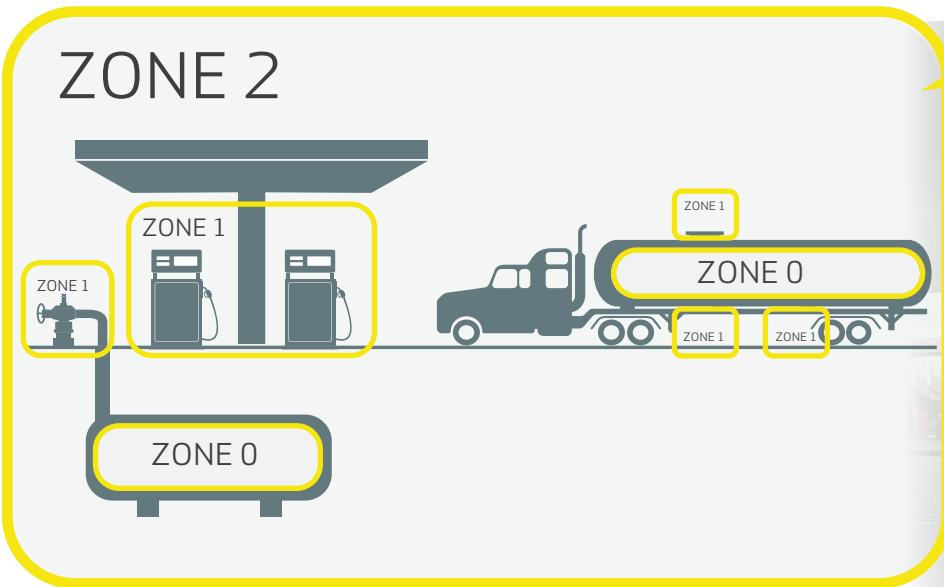
Work area with explosive atmospheres

**ZONE
1/21**

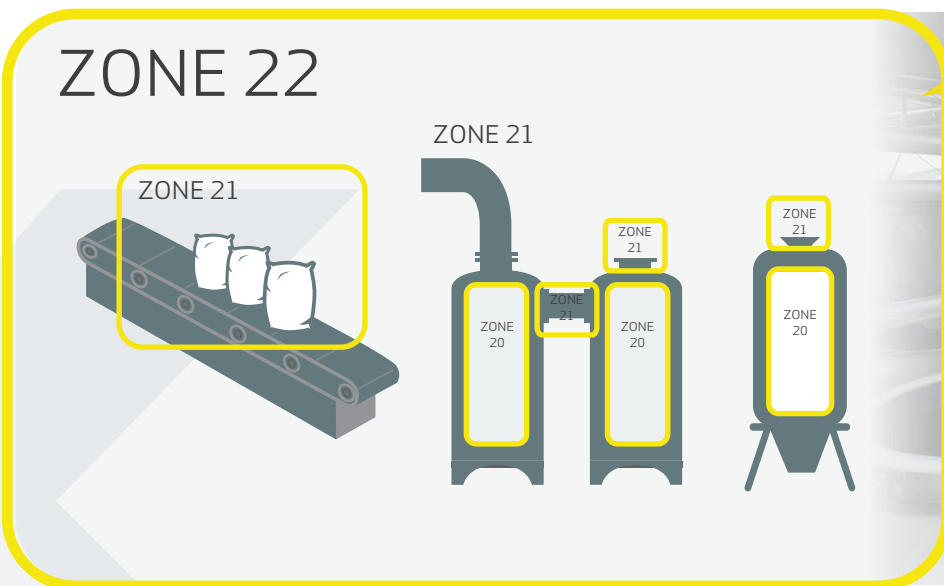
Work area where explosive atmospheres are likely to occur

**ZONE
2/22**

Work area with limited risk of explosive atmospheres



Group II according to ATEX and IECEx



Group II according to ATEX and Group III according to IECEx



SCANGRIP EX work lights are approved and certified by



according to the ATEX Directive no. 2014/34/EU
effective from **April 2016** and according to





Chemical industry
 Oil and natural gas extraction
 Petrol station
 Offshore
 Marine sector



Tank vehicle
 Shipyard
 Power plant
 Refinery
 Rescue service
 Aviation



Sugar refinery
 Grain and feed industry
 Fertiliser industry
 Flour milling
 Pharmaceutical industry
 Waste treatment plant
 Timber industry



APPLICATION AREAS



// SCANGRIP is Europe's leading manufacturer of work lights for professionals providing the strongest and most comprehensive ranges of work lights with the latest LED lighting technology available on the market.

SCANGRIP is innovation from Denmark and receives strong recognition in the marketplace for its product design, and the products are known for their high quality.

SCANGRIP strives for perfection, and is continuously optimizing and improving light output, battery capacity, design and ergonomics, durability, user-friendliness, and functionality. The aim is to set new standards for professional work lights.

SCANGRIP was established in 1906 and has a long, impressive history of manufacturing high-quality hand tools and work lights for the industrial, construction, and automotive sectors.

SCANGRIP is part of Hultafors Group - a global company offering a unique portfolio of premium brands within personal protection, tools, and other equipment for discerning craftsmen. Together, we are on a mission to create a better day for professional users.

SCANGRIP.COM

This product proudly carries the Nordic Swan Ecolabel, reflecting SCANGRIP's commitment to environmental responsibility.